

Building Back Fairer, Stronger, Together.

**Tameside Joint Health & Wellbeing
Strategy and Locality Plan
2023-2028**



TAMESIDE SHARED VISION

Give Tameside children the best start in life

Help people stay well across the life course and detect illness earlier

Enable all Tameside residents to grow old with dignity and independence

All age mental health and wellbeing

The people in Tameside all have the opportunity to have a healthier and happier life, no matter where they live or who they are. This should include people being able to get the help and support they need without facing barriers, to make Tameside a great place for everyone.

Tackling inequalities in all our work

Help people get into, and stay in good work

Strengthen our communities

Deliver healthy places with accessible and inclusive services

To do this we will

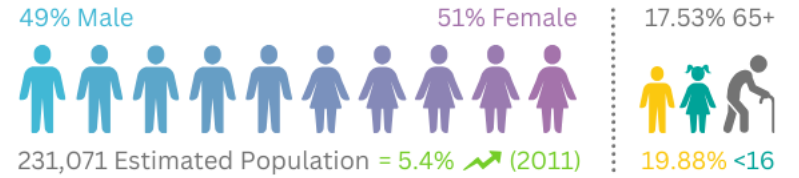
Building back
Fairer

Building back
Stronger

Building back
Together



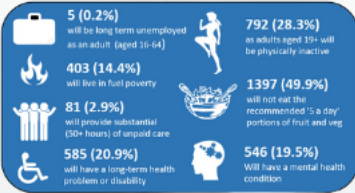
Tameside in Context 2023



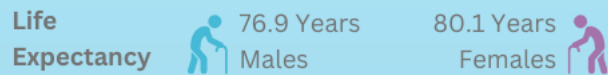
Help people stay well across the life course and detect illness earlier



Third highest rate of **alcohol related cancers** in country
Early preventable deaths are almost 50% higher in Tameside compared to the national average.



Enable all Tameside residents to grow old with dignity and independence



13.1% aged 66 yrs or older lives alone
1,989 per 100,000 aged 66 yrs or over have been injured in a fall
83.3% of care homes in Tameside are rated as good or outstanding by CQC
Tameside population aged 65 yrs. plus has seen a 18.4% increase since 2011

Give Tameside Children the best start in life

- 39.2% of children in year 6 classified as overweight / obese
- 8.4% of children aged 5-17 in Tameside have a diagnosed mental health disorder
- Highest admission rate for under 19s for asthma in the country

Deliver Healthier places with accessible and inclusive services

43% of people live in areas in 20% most deprived nationally



Take-away Density - 143 take-aways per 100,000 population - highest in GM, 17th Nationally

Air Pollution - Tameside has the 2nd highest level of fine particulate matter in GM (indicator of poorer air quality)

Help people get into, and stay in good work



28.5% of jobs in Tameside paying below the living wage (2021) the highest rate in GM, equating to approx. 13,000 jobs

9% of the working population working in health and social care
2% had sickness absence from work in last week

Strengthen our Communities



In every 1000 people in TAMESIDE:

- 20 have been supported by social prescribing in the last 12 months
- 180 people are living in poverty
- 140 are experiencing fuel poverty
- 90 people have been a victim of crime
- 19 are living in temporary accommodation
- 37 have been a victim of domestic abuse
- 49 have been a victim of violent crime



The Voice of Tameside Residents

...more job
opportunities that
match skills

...satisfied with
Tameside as a place to
live

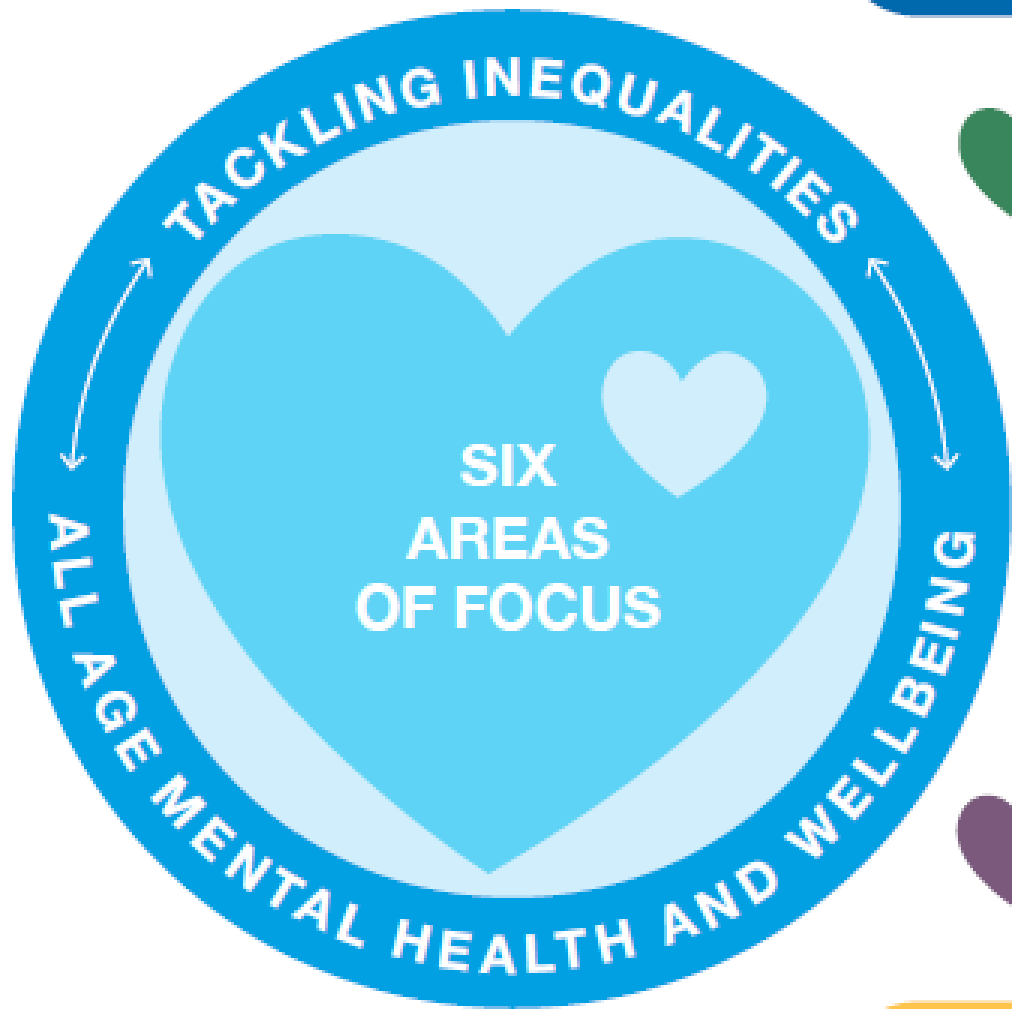
...residents are
concerned about
poverty and climate
change

...charities
should be
supported


...recognise that local
and national funding is
a challenge

...want to see
improved access
to mental health
support


SIX AREAS OF FOCUS




Give Tameside children the best start in life




Help people stay well across the life course and detect illness earlier



Enable all Tameside residents to grow old with dignity and independence




Help people get into, and stay in good work



Strengthen our communities



Deliver healthy places with accessible and inclusive services



Building
back
Fairer

Building
back
Stronger

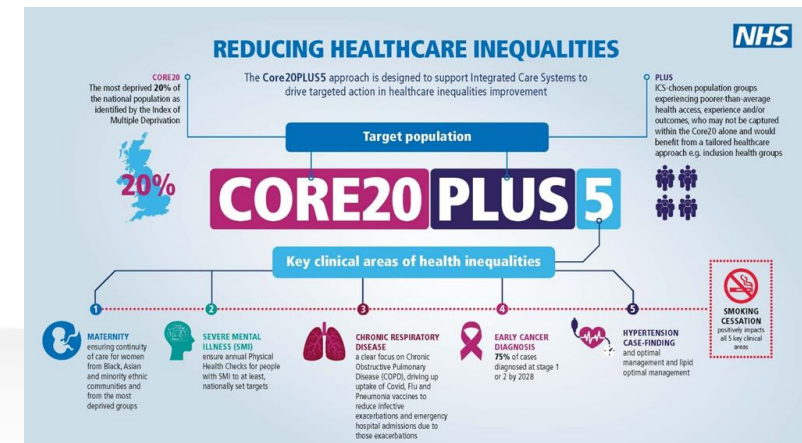
Building
back
Together

Health Inequalities...

“avoidable,
unfair and
systematic
differences in
health between
different groups
of people”



- **FAIRER** - Tackling Inequalities (Inequalities Reference Group; *GM Fairer Health for All* framework; systematic approaches)
- **STRONGER** – Covid-19 recovery; prioritising prevention; enablers; needs assessments
- **TOGETHER** – Working with the whole system (inc. VCFSE); working with communities; links to Greater Manchester ICP



ANY QUESTIONS?

Please read the strategy

[Building-Back-Fairer-Stronger-Together-Tameside-Joint-Health-and-Wellbeing-Strategy-and-Locality-Plan-23-28.pdf](#)